

AssetOne

About FIS

AssetOne, A part of CKS Global Ventures Group, presents to you the AI-based Field Intelligence Suite (FIS) that employs advanced image and video processing technology and image augmentation techniques of Machine learning. Identify the faulty assets automatically from the images and videos captured by the drone in a field inspection.

Enabling predictive maintenance to improve operational efficiency and minimize downtime. With instant defect recognition, you can make informed decisions and allocate resources more effectively.

Field Intelligence Suite



Contact Us



+1-302-730-6090
+91-8898015124



contact@assetone.net



920 Justison St, Wilmington,
DE, 19801





WHY CHOOSE US?

- **Safety Focus:** Highlight your commitment to railway safety through comprehensive inspections and cutting-edge technologies.
- **Experience and Expertise:** Emphasize your team's qualifications and experience in railway inspections.
- **Technology Advantage:** Do you use advanced inspection methods like drones or laser profiling? Mention these to show you're at the forefront of the industry.
- **Efficiency and Cost-Effectiveness:** Can your inspections save clients money through preventative maintenance and fewer delays?
- **Track Record:** Showcase your successful past projects and client satisfaction.
- **Compliance:** Assure potential clients you adhere to all relevant safety regulations and inspection standards.

ASSETONE SERVICES



Maximo Consultation

Unlock the full potential of IBM Maximo with expert guidance.



Machine Learning & Deep Learning Models

We develop the machine learning models as per your personal requirements.

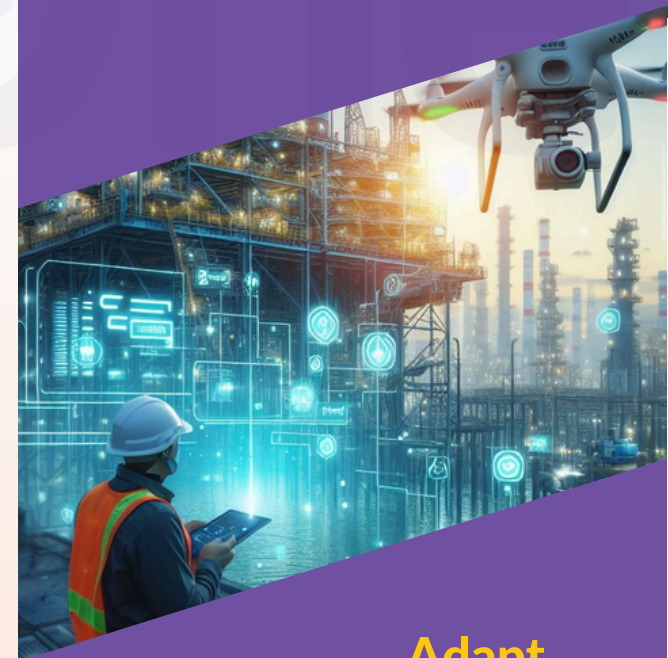


Maximo Training Services

We offer role-based training for the end users, field technicians, maintenance supervisor, maintenance crew, planners, and scheduler on IBM Maximo.

ABOUT US WHO WE ARE

The group focuses on Real Estate, Financial, and industrial Asset Management solutions and services. AssetOne is committed to providing the 'best foot forward' advisory tips and techniques to our customers and partners. We are focused on futuristic EAM solutions with IoT and AI platforms, Machine learning, Voice recognition, and Predictive Analytics solutions in the EAM space.



**Adapt
Improvise
Overcome**

”

"Foresight through data, foresight through sight."

CHALLENGES FACED

- Extreme Environments: Offshore rigs, deserts, and Arctic regions expose equipment to brutal conditions, increasing maintenance needs.
- Difficult Access: Confined spaces and remote locations like well sites pose logistical challenges for inspectors to reach and assess equipment.
- Aging Infrastructure: Older equipment requires specialized techniques and tools for proper inspection.
- Safety Concerns: Balancing thorough inspections with worker safety in hazardous environments is a constant struggle.
- Data Management: Collecting, analyzing, and managing inspection data from drones, sensors, and manual inspections can be overwhelming.
- Regulations: Meeting strict safety, environmental, and asset integrity regulations necessitates effective inspections.
- Retiring Experienced Workforce
- Maintaining a balance between Safety, Reliability & Rising Inspection Costs
- Regulatory Compliance & Managing Peak Season Demands
- Ongoing impact of Weather and Environmental Events
- Visualize & Plan Optimal Inspection Frequency



Field Intelligence Suite

This cutting-edge suite leverages advanced image and video processing with machine learning to automatically identify faults in the assets captured by drones. This translates to:

- **Predictive Maintenance:** Identify potential problems before they cause costly downtime.
- **Informed Decisions:** Instant defect recognition allows for efficient resource allocation.
- **Secure Cloud Storage:** FIS protects your valuable inspection data from unauthorized access, breaches, and natural disasters.
- **Weather Integration:** Better mitigate weather risks by integrating weather data with the suite.
- **Sustainability:** Reduce paper waste, resource consumption, and carbon footprint.
- **Train Your Models:** Using the latest AI/ML models train your own models according to your needs.

Adapt
Improve
Overcome

Our Services

AssetOne's AI-based Field Intelligence Suite (FIS) uses advanced image processing and machine learning to identify faults in drone images and videos automatically. It has specialized models for various industries, enabling predictive maintenance, operational efficiency, and minimal downtime.

These cutting-edge AI models can pinpoint flaws with precision, learning from vast datasets to identify even subtle anomalies. The suite integrates seamlessly with IBM Maximo, a leading asset management solution, to streamline operations and optimize resources.

FIS also provides access to Weather Data APIs, integrating them with geospatial analytics and dashboards for visualization and alerting capabilities. This helps mitigate risks posed by extreme weather events.

The suite offers comprehensive visualization of defects through dynamic displays, aiding decision-making based on severity. It also ensures secure cloud storage for all your inspection data.

Model training modules to create your unique machine learning models to identify defects according to the defect type. Additional capabilities include image augmentation to multiply the dataset and the powerful label tool to identify defects

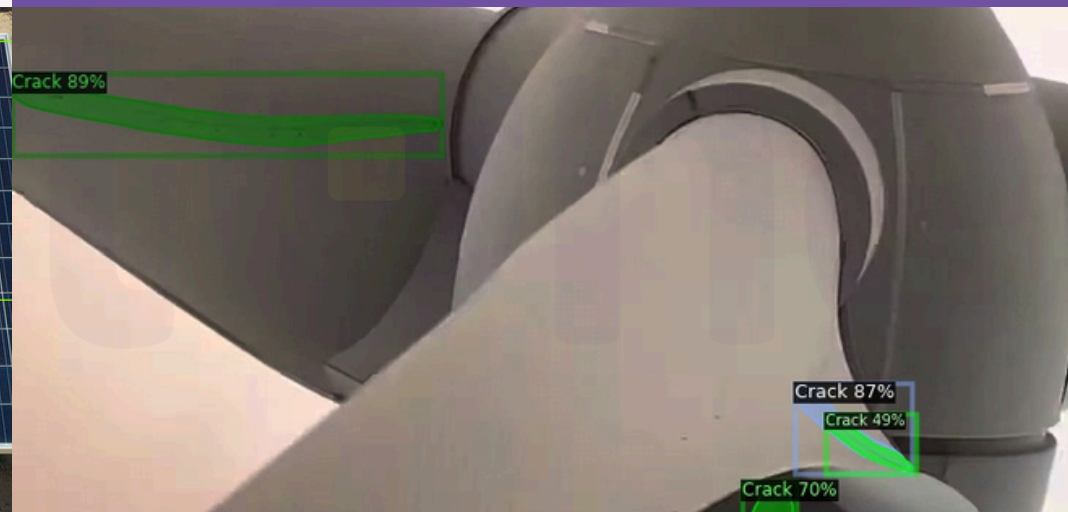
SOLAR FIELD INSPECTION

Ever wondered how to maximize the efficiency of your solar panels? You're not alone. In an era where renewable energy sources are becoming more important, ensuring that your solar panels are operating at their peak is paramount. Imagine a world where faulty solar panels can be identified and replaced while they're still under warranty.



WIND TURBINE INSPECTION

Ever wondered how challenging it could be to maintain wind turbines, especially those stationed in the most remote corners of the world? Imagine having to spot damage as small as a millimetre, react swiftly, and repair it without compromising the turbine's performance or the environment. Sounds like a tall order, doesn't it? Well, not anymore. We introduce to you our Field Intelligence Suite.



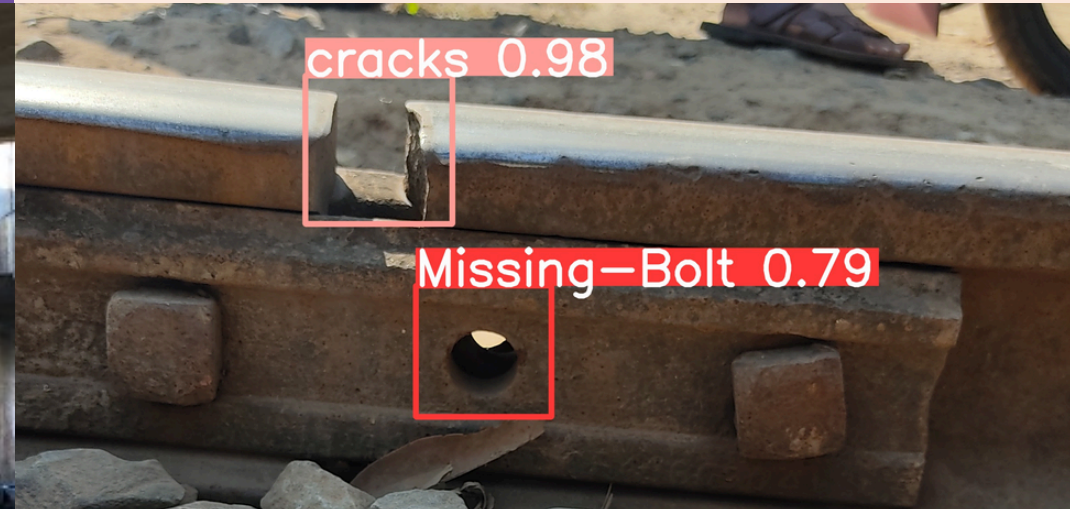
BRIDGES AND INFRASTRUCTURE INSPECTION

Time waits for no one, and our bridges and buildings are feeling the relentless pressure. These once-proud structures, testaments to human ingenuity, are now showing their age. Cracks, corrosion (**Rust**), and material fatigue pose a growing threat to public safety and disrupt daily life.

RAILWAY LINES INSPECTION

Railway line asset inspections are crucial for ensuring the safety and efficiency of train operations. They involve a comprehensive evaluation of various components to identify potential problems and prevent failures.

- Rails
- Fasteners
- Sleepers
- Ballast
- Switches and Turnouts
- Level Crossings
- Signaling Systems
- Overhead Catenary System (OCS)



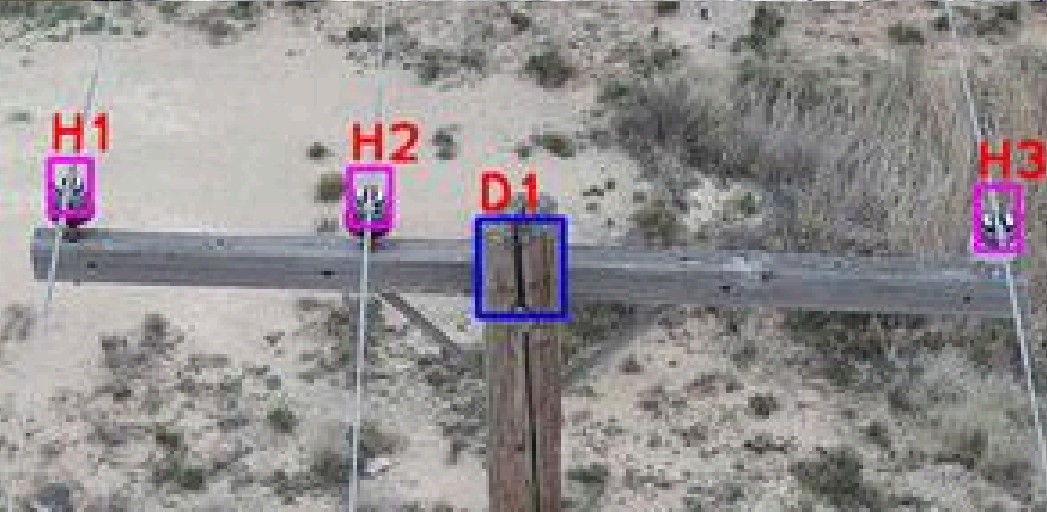
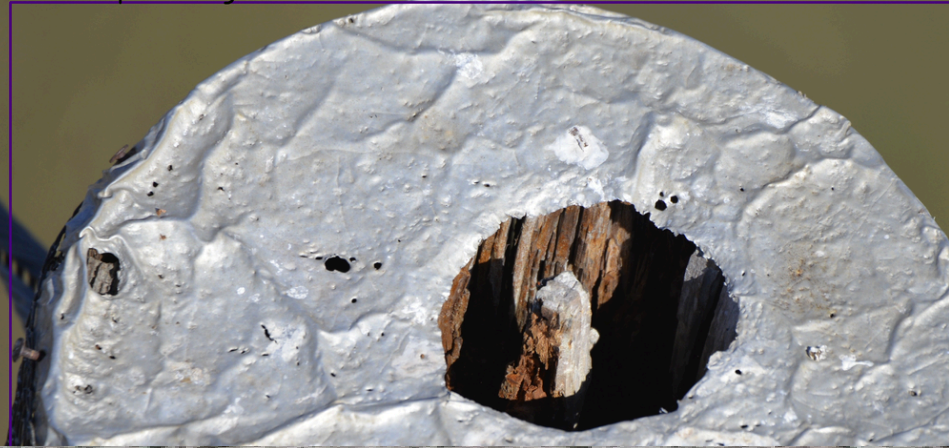
ELECTRIC TRANSMISSION AND DISTRIBUTION

Inspecting vast power grids riddled with miles of transmission lines and equipment is a slow, manual process prone to human error. Traditional methods leave large areas vulnerable due to the sheer scale of inspection needs.

The Growing Threat:

- Intensifying Climate
- Aging Infrastructure.
- Climate Regulations
- Regulatory and Security Burdens:

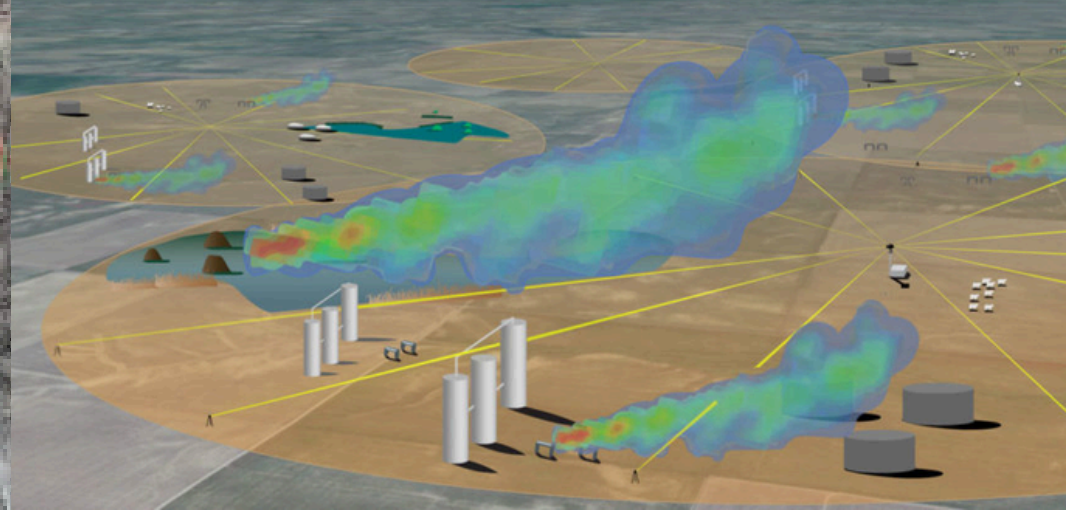
Pole Cap Damage1



OIL & GAS INDUSTRIES

Oil and Gas Inspection Challenges: A Struggle for Efficiency and Safety

The oil and gas industry grapples with visual inspection hurdles due to its demanding environments. From offshore platforms battered by saltwater to pipelines buried deep underground, critical infrastructure faces constant threats. Harsh conditions accelerate corrosion, erosion, and wear, making frequent inspections essential.



YOUR ULTIMATE WEATHER GUIDE

Extreme weather events can be devastating to both people and the environment, and they can cause significant damage to utilities. The loss of power can have catastrophic consequences for both businesses and individuals. However, Now, organizations can access Weather Data APIs through the AssetOne Field Intelligence Suite, which combines and integrates The Weather Company Data APIs with geospatial analytics, and dashboards for visualization and alerting capabilities. This innovative approach is crucial in mitigating the risks and challenges posed by flash floods, hurricanes, and winter storms.

What We Offer

- Process Images & Videos
- Scalable
- Expandable Storage
- Dedicated GPU Allocation
- Pre Trained Model
- Seamless Integration with IBM Maximo
- Report Generation: Graphical & Statistical
- Map feature to locate Assets
- Model Training With The Capabilities Of Image Augmentation & Labeling Tool
- Real-Time Weather Dashboard:
 - Rainfall Forecast
 - Snow Forecast
 - Hailstorm Forecast
 - Reported Earthquake
 - Daily / Hourly Forecast
 - Temperature Forecast
 - Cloud Cover
 - Air Quality Index
 - Wind & Gust Speed
 - Governmental Alerts
 - Lightning Strike Forecast
 - Wildfire Forecast
 - Global Horizontal Irradiance
 - Shear Forecast

Adapt
Improvise
Overcome